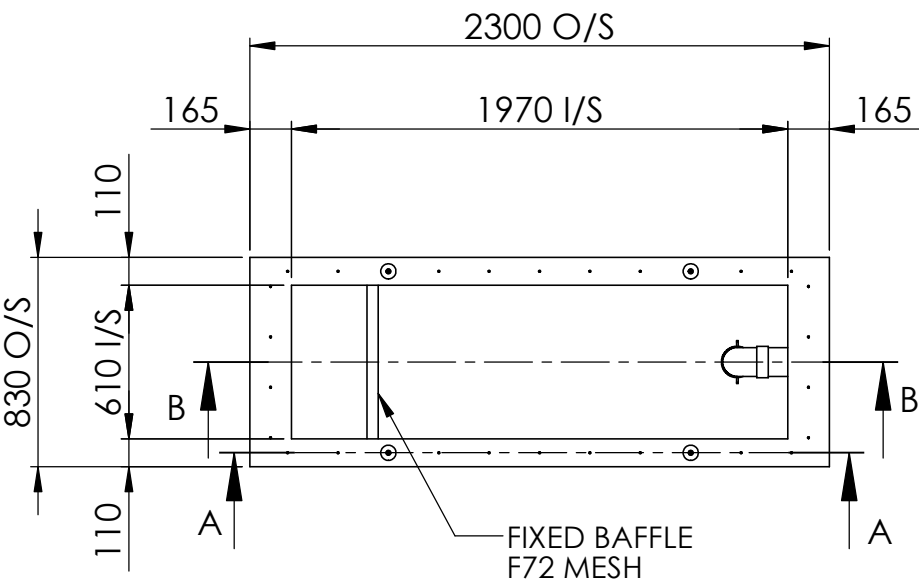
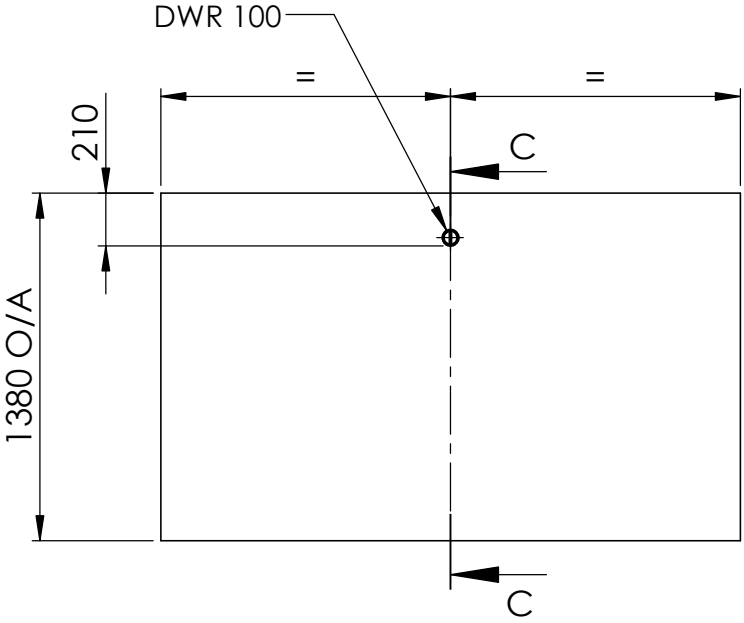
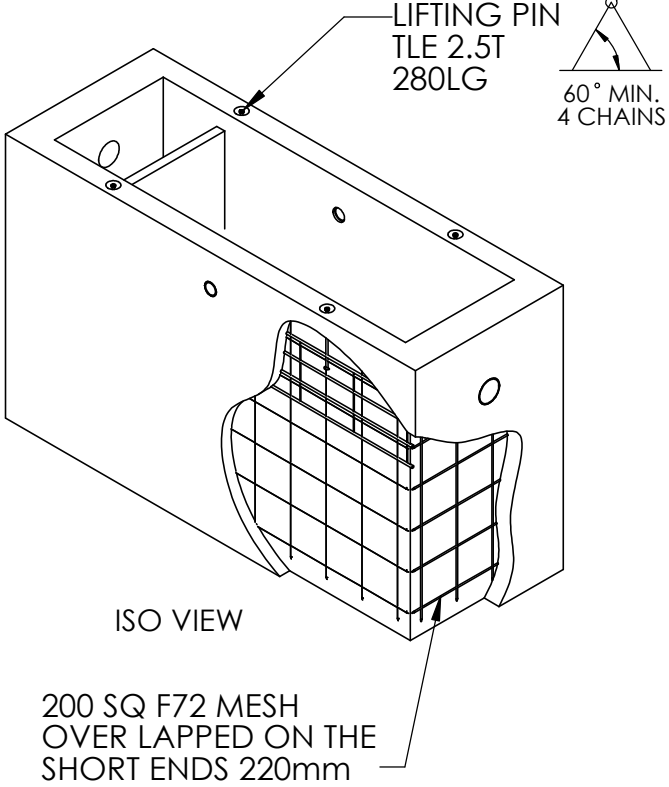
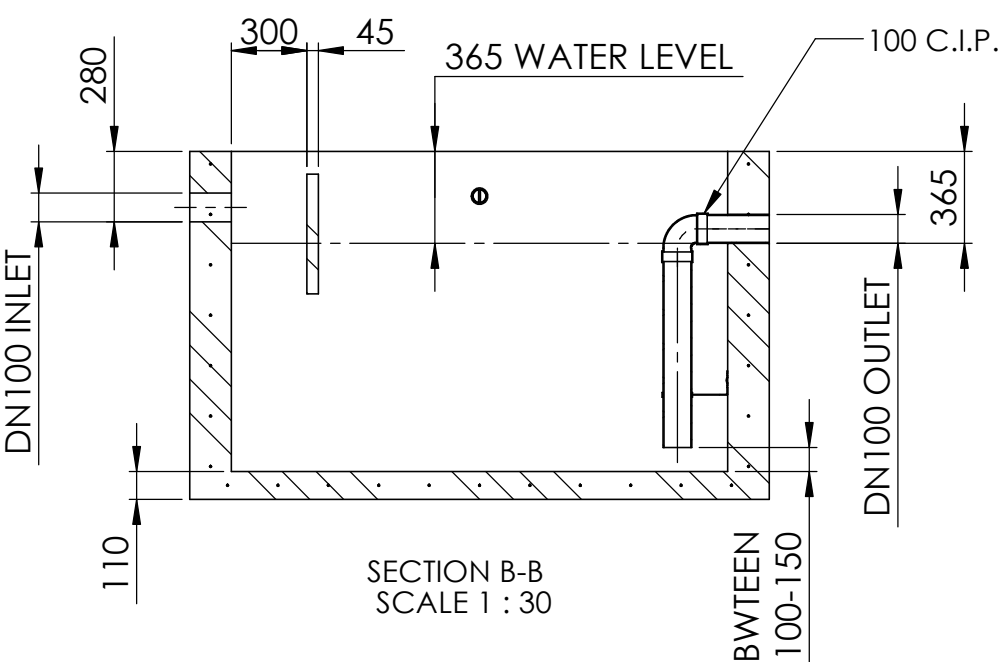


- NOTES:
- 1. SLIGHT TAPER ON CONCRETE UNITS.
 - 2. MEASUREMENT IN MILLIMETRES.
 - 3. 2750 kg

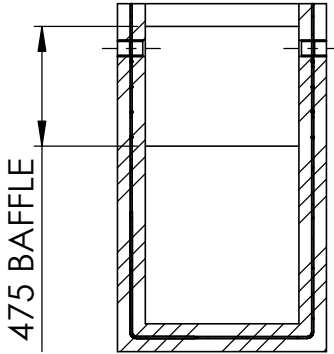
DO NOT SCALE - IF IN DOUBT ASK



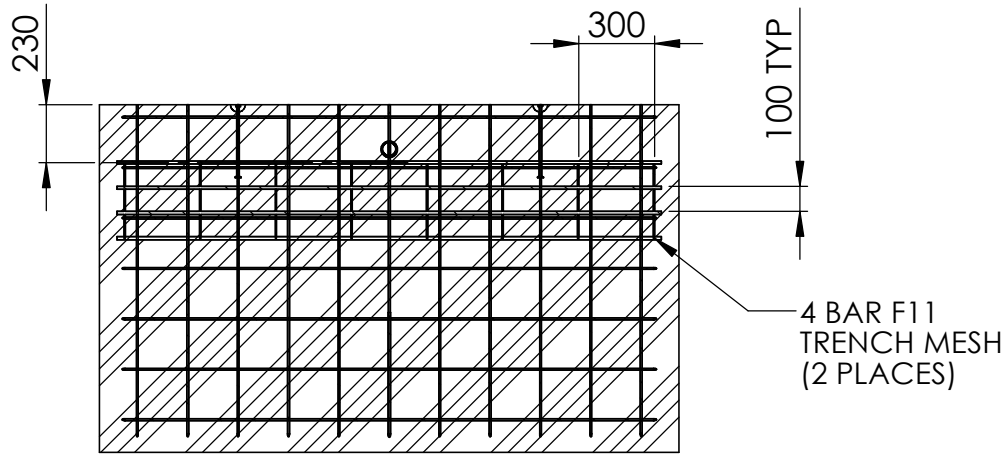
TOP VIEW



SIDE VIEW



SECTION C-C
SCALE 1 : 30



SECTION A-A
SCALE 1 : 30

| CUTTING DETAILS | | | | |
|-----------------|-----------------|------------|---------|-----|
| NAME | DESCRIPTION | CUT LENGTH | BENDING | QTY |
| 4 BAR MESH | F11 TRENCH MESH | 2160mm | | 2 |

DO NOT SCALE
DIMENSIONS ARE IN MILLIMETRES
UNLESS OTHERWISE NOTED

This drawing, including information shown therein is confidential
it is loaned to a supplier for exclusive use by the supplier
Reproduction, exhibition, or use for any other purpose,
or by any other person is not authorised.

In the interests of development we reserve the right to modify
design, equipment and accessories. Dimensional, weight and
performance data is to be understood as within appropriate tolerances.



HENDRIKX CONCRETE PTY LTD

417 PRINCES HIGHWAY, OFFICER, VIC 3809

TEL: (03) 5943 2321

EMAIL: sales@hendrikxconcrete.com.au

WEBSITE: www.hendrikxconcrete.com.au

Client: -

Title: PETROL AND OIL INTERCEPTOR 1100L
MANUFACTURING DETAILS

| | | |
|--|----------|----------|
| Drawn | GB | Checked |
| Date: | 29.09.16 | Approved |
| Drawing Number: 13-HDC-076-M | | |
| Sheet No: | 1 of 1 | |
| Scale: | 1:30 | Rev: 2 |
| A3 | | |